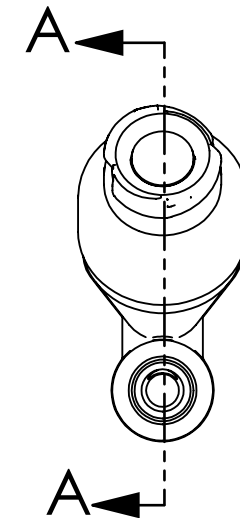
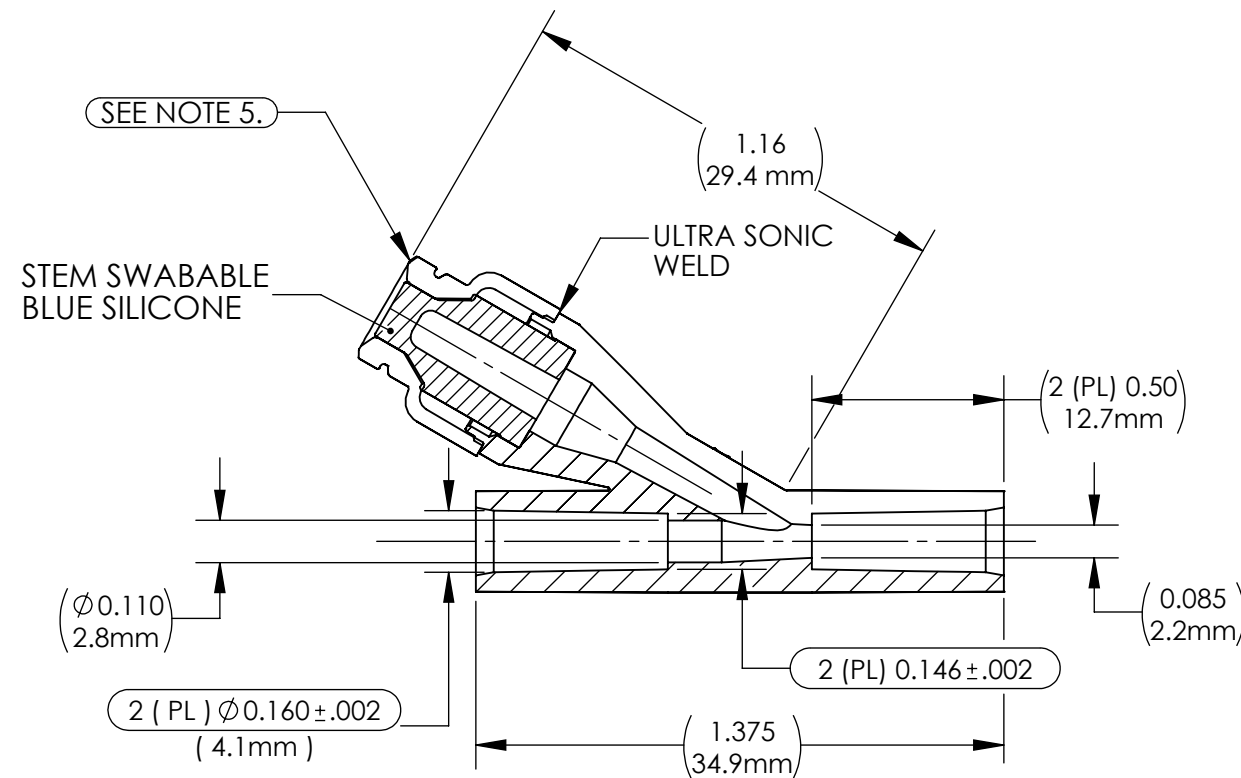


REV	DESCRIPTION (ECO)	DATE	APPROVED
D	ADD ISO80369-7 TO NOTES, ECO 8017	05/01/18	AK
E	UPDATE TUBE PORT DIMENSION TO INCLUDE CHAMFER ECO 11352	10/19/21	SR



NOTES:

1. MATERIAL: CLEAR COPOLYESTER
2. CRITICAL DIMENSIONS ARE CIRCLED AND SUBJECT TO INSPECTION.
3. DIMENSIONS IN PARENTHESES ARE REFERENCE ONLY.
4. ALL DIMENSIONS ARE IN INCHES WITH THE NOMINAL DIMENSIONS IN METRIC BELOW.
5. LUER COMPATIBLE WITH ISO594-2, AND ISO80369-7.

VALVE SPECIFICATION:

BACK PRESSURE: > 30 PSI, REF. (2.1 BAR). ( 40 PSI NOMINAL ) .  
 BIOCOMPATABILITY: PASSES ISO 10993, PART 1.  
 MATERIALS: ALL MATERIALS ARE GAMMA RESISTANT, MEET USP CLASS VI; ARE DEHP FREE, AND NOT MADE WITH NATURAL RUBBER LATEX.  
 POTENTIAL STERILIZATION: ETO; AND GAMMA, BASED ON RAW MATERIAL SPECIFICATIONS.

QUALITY CRITERIA:

O.D. FLASH: 0.015 MAX. (0.4mm)
GATE VESTIGE: 0.01 MAX. (0.3mm)
EMBEDDED PARTICLES, SPOTS, OR STAINS: 0.3mm <sup>2</sup> MAX. OR, NO MORE THAN 3 PER PART.
VOIDS 1.0mm <sup>2</sup> MAX.

**MOLDED PARTS:**  
GATES, PARTING LINES, AND FLASH PER QUALITY CRITERIA

**PROPRIETARY AND CONFIDENTIAL**  
THE INFORMATION CONTAINED IN THIS DRAWING IS SOLE PROPERTY OF HALKEY-ROBERTS CORPORATION, ST. PETERSBURG, FL. ANY REPRODUCTION IN PART OR AS A WHOLE WITHOUT THE WRITTEN PERMISSION OF HALKEY-ROBERTS CORPORATION IS PROHIBITED.

<b>DRAWN BY</b>	DMC	<b>DATE</b>	10/30/14
<b>APPROVED BY</b>	PM	<b>DATE</b>	
<b>MATERIAL</b>			
<b>FINISH</b>			
<b>UNLESS OTHERWISE SPECIFIED:</b>	DIMENSIONS ARE IN INCHES		
<b>TOLERANCES:</b>	ANGULAR: ± 1°		
	TWO PLACE DECIMAL ± .01		
	THREE PLACE DECIMAL ± .005		
<b>THIRD ANGLE PROJECTION</b>			

<b>HR® Halkey-Roberts®</b>	
<b>TITLE</b>	<b>Y CONNECTOR SWABABLE</b>
<b>SIZE</b>	<b>B</b>
<b>SCALE</b>	<b>2:1</b>
<b>DRAWING NO.</b>	<b>C245624050</b>
<b>REV</b>	<b>E</b>
<b>SHEET</b>	<b>1 OF 2</b>
<b>DO NOT SCALE DRAWING</b>	

DRAWING NO.  
C245624050

REV  
E

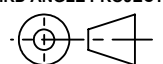
# Customer Drawing

BILL OF MATERIAL:

LUER BODY	Y CONNECTOR	STEM
CLEAR EASTAR COPOLYESTER MN004	CLEAR EASTAR COPOLYESTER MN004	BLUE SILICONE 40 DUROMETER WACKER LR3003/40 DT COLOR, K75238

**MOLDED PARTS:**  
GATES, PARTING LINES, AND FLASH PER QUALITY CRITERIA

**PROPRIETARY AND CONFIDENTIAL**  
THE INFORMATION CONTAINED IN THIS DRAWING IS SOLE PROPERTY OF HALKEY-ROBERTS CORPORATION ST. PETERSBURG, FL. ANY REPRODUCTION IN PART OR AS A WHOLE WITHOUT THE WRITTEN PERMISSION OF HALKEY-ROBERTS CORPORATION IS PROHIBITED.

<b>DRAWN BY</b>	DMC	<small>DATE</small> 10/30/14
<b>APPROVED BY</b>	PM	<small>DATE</small>
<b>MATERIAL</b>		
<b>FINISH</b>		
<b>UNLESS OTHERWISE SPECIFIED:</b> DIMENSIONS ARE IN INCHES TOLERANCES: ANGULAR: ± .1° TWO PLACE DECIMAL ± .01 THREE PLACE DECIMAL ± .005	<b>THIRD ANGLE PROJECTION</b> 	

<b>HR® Halkey-Roberts®</b>	
<b>TITLE</b>	<b>Y CONNECTOR SWABABLE</b>
<b>SIZE</b>	<b>B</b>
<b>SCALE</b>	2:1
<b>DRAWING NO.</b>	C245624050
<b>REV</b>	E
<b>SHEET</b>	2 OF 2
<b>DO NOT SCALE DRAWING</b>	