

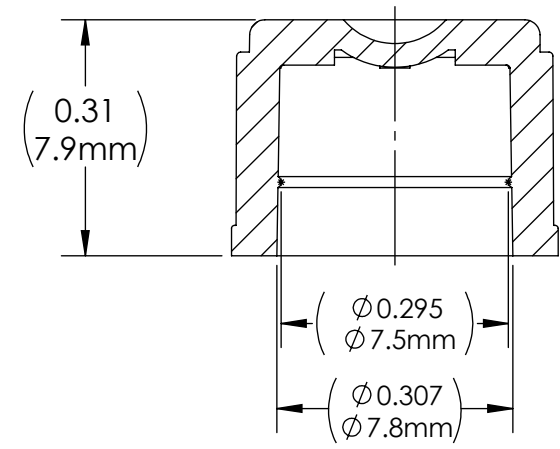
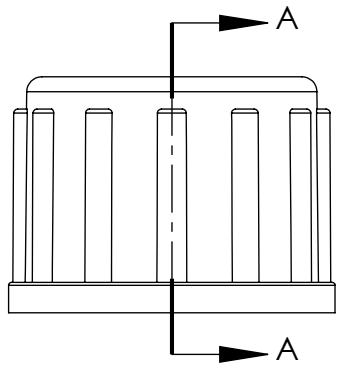
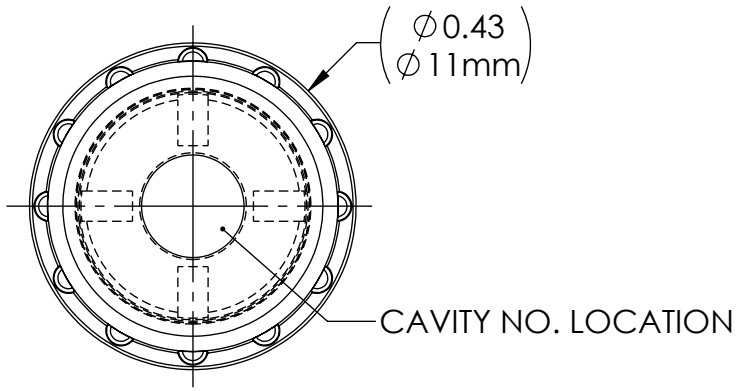
DRAWING NO.
C2451222XX

REV
D

Customer Drawing

REVISION HISTORY

REV	DESCRIPTION (ECO)	DATE	APPROVED
C	UPDATE MATERIAL TO READ HP373P ECO 12734	06/26/24	DK
D	ADD ALTERNATE MATERIAL TO NOTE 1. ECO 13099	07/22/25	DK



SECTION A-A

NOTES:

- SUFFIX "XX" INDICATES MATERIAL & COLOR:
45 - CLEAR POLYPROPYLENE PURELL HP373P OR EQUIVALENT.
90 - CLEAR POLYPROPYLENE MEDSELECT P5M6K080.
- CRITICAL DIMENSIONS ARE CIRCLED AND SUBJECT TO INSPECTION.
- DIMENSIONS IN PARENTHESES ARE FOR REFERENCE ONLY.
- ALL DIMENSIONS ARE IN INCHES, WITH NOMINAL DIMENSIONS IN METRIC BELOW.

MOLDED PARTS:
GATES, PARTING LINES, AND FLASH PER QUALITY CRITERIA

PROPRIETARY AND CONFIDENTIAL
THE INFORMATION CONTAINED IN THIS DRAWING IS SOLE PROPERTY OF HALKEY-ROBERTS CORPORATION ST. PETERSBURG, FL. ANY REPRODUCTION IN PART OR AS A WHOLE WITHOUT THE WRITTEN PERMISSION OF HALKEY-ROBERTS CORPORATION IS PROHIBITED.

DRAWN BY	DMC	DATE	6/15/12
APPROVED BY	DK	DATE	06/26/24
MATERIAL	SEE NOTE		
FINISH	N/A		
UNLESS OTHERWISE SPECIFIED:	THIRD ANGLE PROJECTION		
DIMENSIONS ARE IN INCHES TOLERANCES: ANGULAR: $\pm 1^\circ$ TWO PLACE DECIMAL $\pm .01$ THREE PLACE DECIMAL $\pm .005$			

HR[®] Halkey-Roberts[®]

SNAP-ON CAP

SIZE A DRAWING NO. **C2451222XX** REV **D**

SCALE **4:1** **DO NOT SCALE DRAWING** SHEET **1 OF 1**