

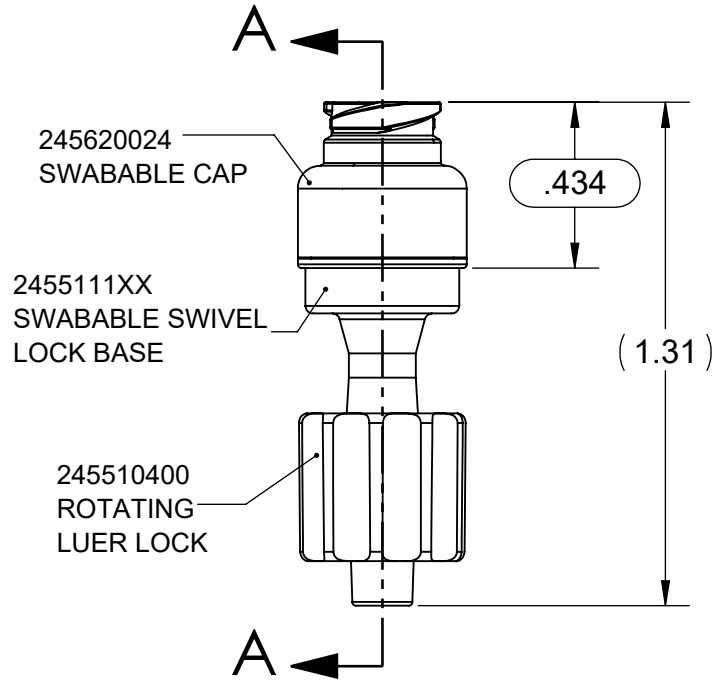
DRAWING NO.
2455110XX

REV
D

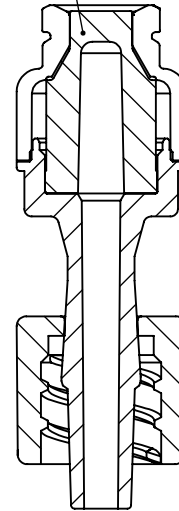
Manufacturing Drawing

REVISION HISTORY

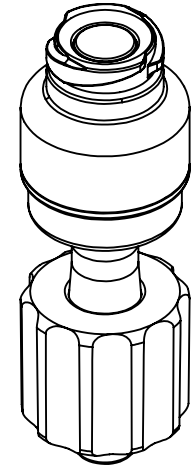
REV	DESCRIPTION (ECO)	DATE	APPROVED
C	UPDATE WELD HEIGHT .434 ECO 11211	07/14/21	AK
D	ADD ALTERNATE STEM, ECO 11307	09/28/21	SR



24530001XH
SWABABLE STEM



SECTION A-A



NOTES:

- SUFFIX "XX" INDICATES COLOR AND MATERIAL.
24 - CLEAR POLYCARBONATE
- CRITICAL DIMENSIONS ARE CIRCLED, AND SUBJECT TO INSPECTION.
DIMENSIONS IN PARENTHESES, ARE FOR REFERENCE ONLY.

MOLDED PARTS:
GATES, PARTING LINES, AND FLASH PER QUALITY CRITERIA

PROPRIETARY AND CONFIDENTIAL
THE INFORMATION CONTAINED IN THIS DRAWING IS SOLE PROPERTY OF HALKEY-ROBERTS CORPORATION ST. PETERSBURG, FL. ANY REPRODUCTION IN PART OR AS A WHOLE WITHOUT THE WRITTEN PERMISSION OF HALKEY-ROBERTS CORPORATION IS PROHIBITED.

DRAWN BY	DMC	DATE	10/03/19
APPROVED BY	AW	DATE	
MATERIAL			
FINISH			
UNLESS OTHERWISE SPECIFIED:	THIRD ANGLE PROJECTION		
DIMENSIONS ARE IN INCHES			
TOLERANCES:			
ANGULAR: ± 1°			
TWO PLACE DECIMAL ± .01			
THREE PLACE DECIMAL ± .005			

HR® Halkey-Roberts®

TITLE
SWABABLE SWIVEL LOCK ASSY

SIZE	DRAWING NO.	REV
A	2455110XX	D
SCALE	DO NOT SCALE DRAWING	SHEET
2:1		1 OF 1